

422 NE 4th Avenue, PO Box 919, Camas, WA 98607  
(360) 834-2472 • www.cwchamber.com

# Camas-Washougal Map

2021

Camas & Washougal • Events & Fun • Port of CW

CHAMBER OF COMMERCE  
CAMA  
S

## LUTZ HARDWARE

Serving the Community Since 1950

# Do it Best

Your local, hometown hardware store

Over 30,000 items in stock  
Friendly, knowledgeable staff  
U-Haul rentals available

505 NE 4th Avenue, Camas WA (360) 834-2663

## reedcreative

### Your Local Professional Graphic Design Studio

We strategically help you communicate with your target audience in a more creative, compelling and collaborative manner

360.210.4004 • Washougal  
www.ReedCreative.com

Your neighborhood advisor in Washougal

## Edward Jones

MAKING SENSE OF INVESTING

Blaine A Peterson, CRPC  
Financial Advisor

360-335-8902 www.edwardjones.com

## We're Always Here

Report Outages online or 360-992-8000

24 Hour Customer Service 360-992-3000

Clark Public Utilities clarkpublicutilities.com

Protection for today and planning for tomorrow

COURTNEY WILKINSON, LUTCF (360)210-4434

PNW Financial Concierge  
PNWFC.tax

## COLUMBIA RIDGE

### VIBRANT ASSISTED LIVING

Visit our active senior living community in Washougal! Schedule your visit today.

(360) 335-1238  
columbiaridgeseniorliving.com  
2300 W. 9th Street, Washougal, WA 98671

## FAMILY MEDICINE in Washougal

VANCOUVER CLINIC

291 C Street, Suite 110  
Washougal, WA 98671  
360-882-2778 | tv.c.org/washougal

## EXPERTS FOR SMALL AND MEDIUM BUSINESSES

PAULSON DYRA & COMPANY  
CERTIFIED PUBLIC ACCOUNTANTS  
Since 1979

Your Hometown Source For:

- Accounting & Financial Statements
- Income Tax Returns • Tax Planning
- Payroll Services • IRS and State Tax Audits
- Outsourced Bookkeeping and Accounts Payable
- QuickBooks® Consulting
- General Business Consulting
- Estates & Trusts

Norman D. Paulson, CPA • Laura Dyra, CPA

Serving Camas/Washougal Licensed in Washington & Oregon

360-834-4911  
www.prdcpas.com  
733 N.E. Fourth Ave • Camas WA 98607

Thinking about buying or selling a home in Camas or Washougal? Contact Columbia River Realty today!

Columbia River REALTY

1700 Main Street, Suite 222, Washougal, WA 98671  
Phone: 360-210-4690 • ColumbiaRiverRealty.com

# Learn to Fly!

## Shangri-La Aviation

Learn from one of the best!

Certified Flight Instructor Neil Cahoon is ready to help you realize your dream of flight. Neil has logged more than 20,000 flight hours spanning a career in aviation; first as a USAF Fighter Pilot and then as a Commercial Airline Pilot for more than 25 years. However, his real passion is teaching the art of flying to students in his single engine J3 Cub.

Call Neil Cahoon today!  
Tel. (360) 600-0239

Shangri-La Aviation  
Based at Grove Field Airport in Fern Prairie  
Email: NeilCahoon@comcast.net  
USAF Retired, CFI

## Sip & PAINT ART FARM for FUN!

Learn to paint vibrant oils on canvas with local artist Liz Pike at ART FARM

ART FARM is a mile north of Lacamas Lake Roundabout at Shangri-La Farm in Fern Prairie 26300 NE Third Street, Camas, WA 98607

See Paint Workshop Schedule: <http://LizPike.Art>  
Call or Text (360) 281-8720

Get More Visitor and Business Info at [www.cwchamber.com](http://www.cwchamber.com)

# Lisa Le

PROPERTIES | boutique experience

It is our honor and pleasure to serve you. Thank you for allowing us to assist you with your real estate needs.

We are passionate about guiding buyers to the ideal property in our community. Selling? We'll help you get top dollar and find buyers who will love your home as much as you do.

Your satisfaction is our priority!

We work to help you achieve your goals. Let's meet to discuss how our team can be of value to you.

Lisa Le  
418 NE 4th Ave Camas, WA  
360-213-7864 | lisaleproperties.com  
lisa@lisaleproperties.com

## Points of Interest

Major events in Camas and Washougal can be found at the event page [cwchamber.com](http://cwchamber.com)

Downtown Camas centers around a unique tree-lined core on NE 4th Avenue.

Downtown Washougal and Reflection Plaza in the city center.

Lacamas Lake & Camas Lily Fields offer beauty, hiking, boating and more!

The Pendleton Woolen Mills has been in operation since 1911 and has a factory outlet store.

The Two Rivers Heritage Museum has over 6000 photos and 200 oral histories, including those of pioneering families.

The Port of Camas/Washougal Marina offers a boat launch, recreation, a park, historical information and events.

At Steamboat Landing, stroll on a floating boardwalk that leads to an elevated observation deck with views of the Columbia River, Mt. Hood and Oregon.

Steigewald Lake National Wildlife Refuge is located adjacent to Washougal, on 1,049 acres of former Columbia River flood plain.

Captain William Clark Park at Cottonwood Beach is where the Corps of Discovery camped for six days while on their journey through this area in 1806.

Be on the lookout for artistic murals throughout both Camas and Washougal.

[cwchamber.com](http://cwchamber.com)

# WASHOUGAL MAP

**Legend**

- Public Buildings: Public Buildings, Post Office
- Emergency Services: Sheriff, Police
- Public School: Public School
- Private School: Private School
- Park Land: Park Land
- City Boundary: City Boundary
- Urban Growth Area Boundary: Urban Growth Area Boundary

## Find us on

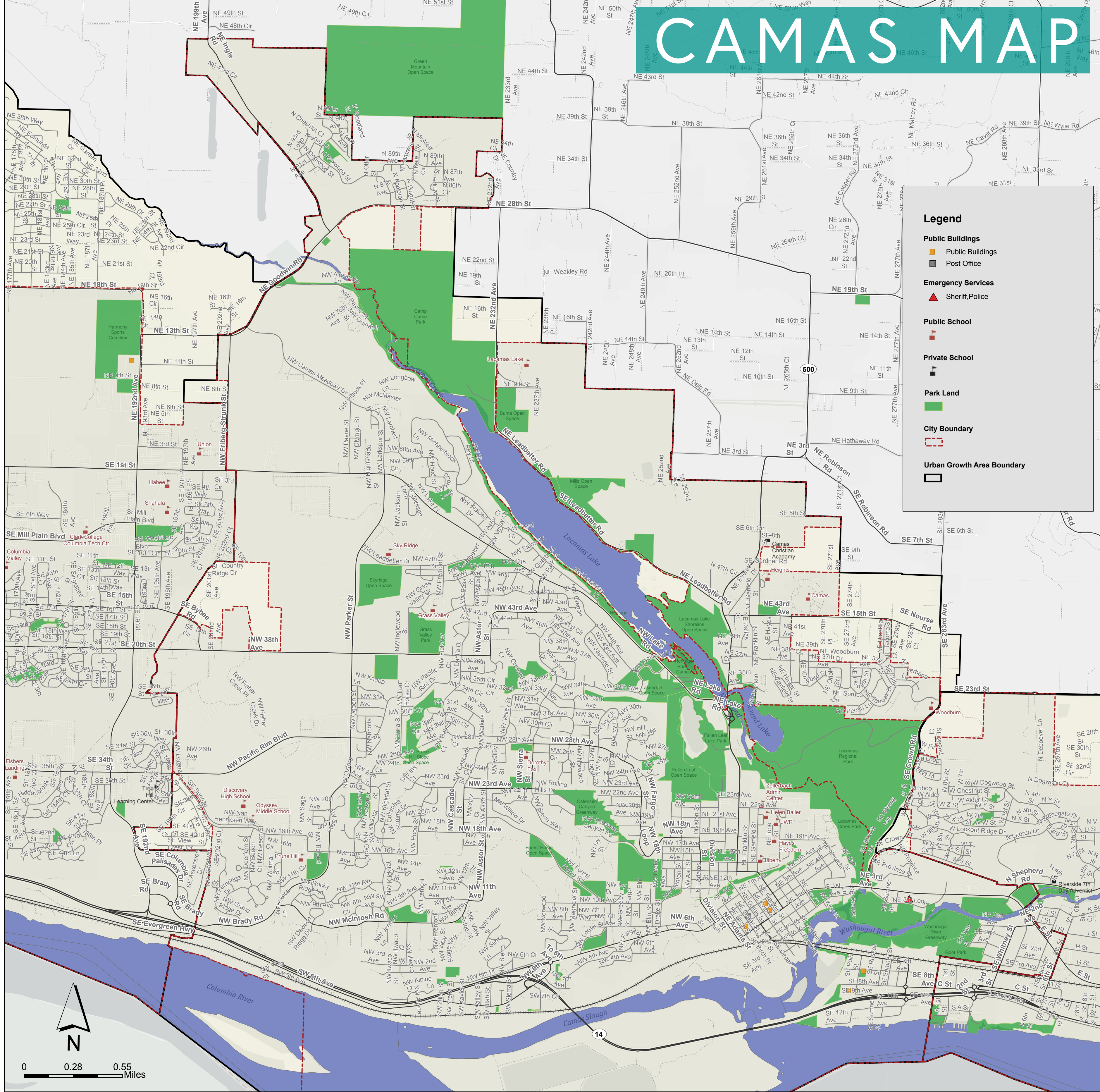
Find info on [cwchamber.com](http://cwchamber.com) & Hot Deals Online at Member Businesses, Events Calendar,

- Camas Days
- Farmers Markets
- First Fridays
- Community Events

Camas and Washougal are side-by-side cities located on the Columbia River in Southwest Washington. Often referred to as Washington's "Gateway to the Gorge," Camas and Washougal are full of great recreational, cultural, shopping & dining opportunities for couples and families alike. While Camas embodies a historic downtown core, the main square of Washougal is modern and breathtaking. Spend a day, spend a week!



# CAMAS MAP



### Legend

- Public Buildings**
  - Public Buildings (Yellow square)
  - Post Office (Black square)
- Emergency Services**
  - Sheriff/Police (Red triangle)
- Public School**
  - Public School (Red square)
- Private School**
  - Private School (Black square)
- Park Land**
  - Park Land (Green square)
- City Boundary**
  - City Boundary (Red dashed line)
- Urban Growth Area Boundary**
  - Urban Growth Area Boundary (Black solid line)

**THE PORT**  
CAMAS-WASHOUGAL

**Business & Industrial Park  
Recreational Marina & Airport**

**DAVID RIPP**  
EXECUTIVE DIRECTOR  
@ EXT 101 david@portcw.com

Office: (360) 835-2196 | david@portcw.com  
Fax: (360) 835-2197 | david@portcw.com  
Visit Us @ 24 South "A" Street - Washougal

[www.portcw.com](http://www.portcw.com)

INTERNAL MEDICINE, FAMILY MEDICINE,  
PEDIATRICS, URGENT CARE,  
VISION CENTER, LAB, AND IMAGING  
in Camas

**VANCOUVER CLINIC**

4500 SE Columbia Palisades Drive  
Camas, WA 98607

360-882-2778 | [tvc.org/camas](http://tvc.org/camas)

**Lily Atelier**

Come and explore what Lily Atelier has to offer! We bring to you hand selected, one of a kind pieces that will keep you stylish from head to toe! We look forward to shopping with you and adding our personal touch to your Camas experience.

Contact @ [lily@lilyatelier.com](mailto:lily@lilyatelier.com)

360-834-9215

237 NE Fourth Avenue Camas, WA 98607

"Camas-Washougal's Longest Serving Funeral Family"

**Brown's**

FUNERAL HOME & CREMATION SERVICES

Cremations - Burials - Head Stones

Visit us online @ [www.brownsfh.com](http://www.brownsfh.com)

410 NE Garfield Street  
Camas, WA 98607

(360) 834-3692

**JUXTAPOSITION**

HOME FURNISHINGS, DECOR, ART & GIFTS

425 NE 4TH AVE, CAMAS • 360.834.1810  
ARTFULJUXTAPOSITION.COM  
@JUXTAPOSITIONCAMAS

**ARKTANA**

STYLES YOU CAN WEAR ALL DAY

SHOES • CLOTHING • HANDBAGS • JEWELRY

**Windermere**  
Crest Realty Co.

YOUR CAMAS & WASHOUGAL HOME TOWN REALTORS

401 NE THIRD AVENUE CAMAS, WA 98607 (360) 834-3344  
WINDERMERECAMAS.COM

Families who want to protect their legacy are represented by Schwabe.

Lisa Lowe  
Tax, Trusts, and Estate Planning  
360-905-1434  
alowe@schwabe.com

**Schwabe**  
WILLIAMSON & WYATT

700 Washington Street, Suite 703  
Vancouver, WA 98660  
[schwabe.com](http://schwabe.com)